



# new EL 12



reduced dimensions and simple use reduce handling times



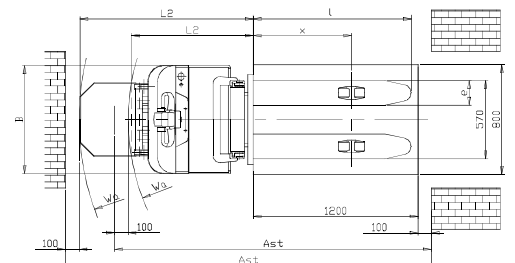
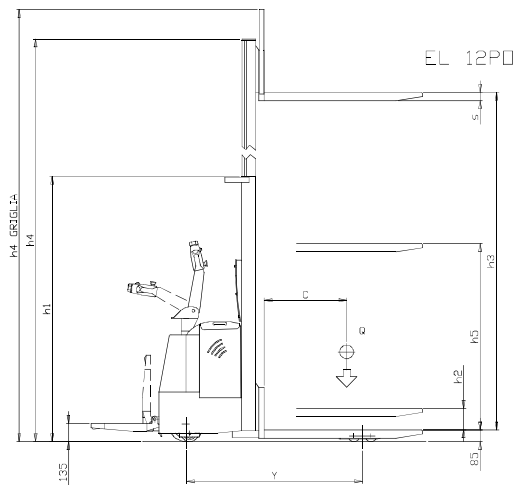
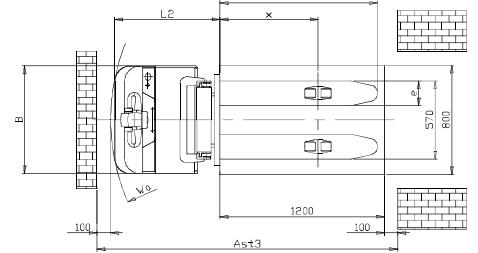
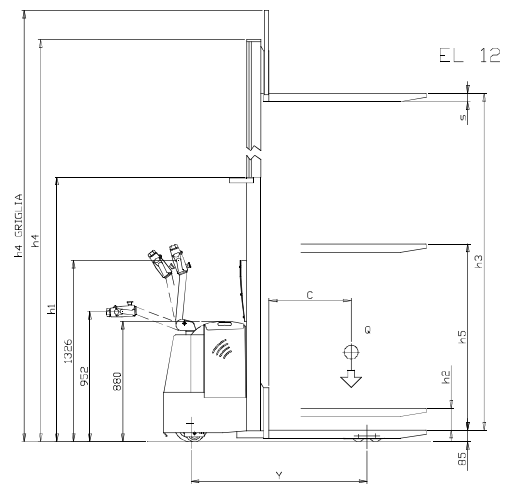
in-built battery charger for batteries up to 240 Ah (optional)

This new model has been designed to guarantee excellent performance and the capability of adapting to different applications. Maximum stability guaranteed by the swivel castors that remain closed inside the frame.

## COMPACT DIMENSIONS MAXIMUM STABILITY



CHARACTERISTICS			
Maker	Firm	SAMAG	
Model	Name	EL 12	EL 12 PO
Capacity	Q = Load maximum	t	1,2
Load centre	c = Load centre distance	mm	600
Traction	Battery, Diesel, Gas, Electric	Battery	
Steering	Draw bar, Operator standing/seated	Tiller	
Tyres	V=Solid, L=Pneumatic front drive/rear load	V/V	
wheels (X = driving)	Quantity front/rear	1X+2/4	
DIMENSIONS			
Fork carrier plate	DIN / FEM / ISO / Covering	Covering	
Forks	s - e - l	mm	60 - 180 - 1150
Overall dimensions	B = Total width	mm	790
Turning radius	Wa	mm	1512-1519 ②   1626-1985/1633-1992 ①②
Load position	X from middle front axes	mm	715
PERFORMANCE			
Speed	Movement with/without load	Km/h	5.0 / 5.5
	Lift with/without load	m/s	0,13 / 0,22
	Lowering with/without load	m/s	0,25 / 0,16
Gradeability	With/without load	%	7 / 9
Max gradeability	With/without load (KB 5 min.)	%	7 / 15
WEIGHT			
Weight	Including battery	Kg	900 ③   980 ③
Axle load	With load front/rear	Kg	761 / 1339   841 / 1339
	Without load front/rear	Kg	650 / 250   730 / 250
TRACTION			
Wheels	Quantity front/rear	3-4	
	Front dimensions	mm	∅260x85 / ∅125x50
	Rear dimensions	mm	∅85x70
Wheel base	Y	mm	1284 - 1291 ②
Wheel track	At tyre centres front/rear	mm	590 / 390
Space	With load m1 at lowest point	mm	28
	With load m2 at centre of wheel base	mm	30
Service brake	Mechanical/hydraulic / electric / pneumatic	Electric	
Parking brake	With foot / hand / dead man	Dead man	
CONTROLS			
Battery	DIN	NO	
	Tension/capacity with 5 hrs. of discharge	V/Ah	24/210 - 240
	Weight	Kg	205 - 213
Electric motor	Traction motor power (S2 60 min.)	Kw	0.7 Sep. Exc.
	Lift motor power with (S3 15%)	Kw	2
Transmission	Type	Electronic Sep. Exc.	
Drive unit	Type	Helicoidal Gearing	
Work pressure	For equipment (accessories)	bar	150
Noise level	Average noise level of human hearing	dB/(A)	< 70



TYPE	Lift height	Q Kg	h3	h2	h5	L2	L2 PO ①	h1	h4	h4 grid	Ast	Ast PO ②
Non Telescopic	1700	1200	1620	1620	/	769	889-1263	2080	2080	2510	2197	2311-2670
	2500	1200	2420	160	/	769	889-1263	1750	2895	3310	2197	2311-2670
Duplex "D"	3000	1000	2920	160	/	769	889-1263	2000	3395	3810	2197	2311-2670
	3500	700	3420	160	/	769	889-1263	2250	3895	4310	2197	2311-2670
	4000	600	3920	160	/	769	889-1263	2500	4395	4810	2197	2311-2670
Duplex "DL"	2500	1200	2430	/	1270	776	896-1270	1810	2970	3320	2204	2318-2677
	3000	1000	2930	/	1520	776	896-1270	2060	3470	3820	2204	2318-2677

Ast means empty pallet space

- ① Vertical platform / Horizontal platform
- ② D / DL
- ③ Values referred to H3500 with battery 240 Ah

